

FLEXCUBE Information Server
Oracle FLEXCUBE Enterprise Limits and Collateral Management
Release 12.87.7.0.0
[May] [2021]



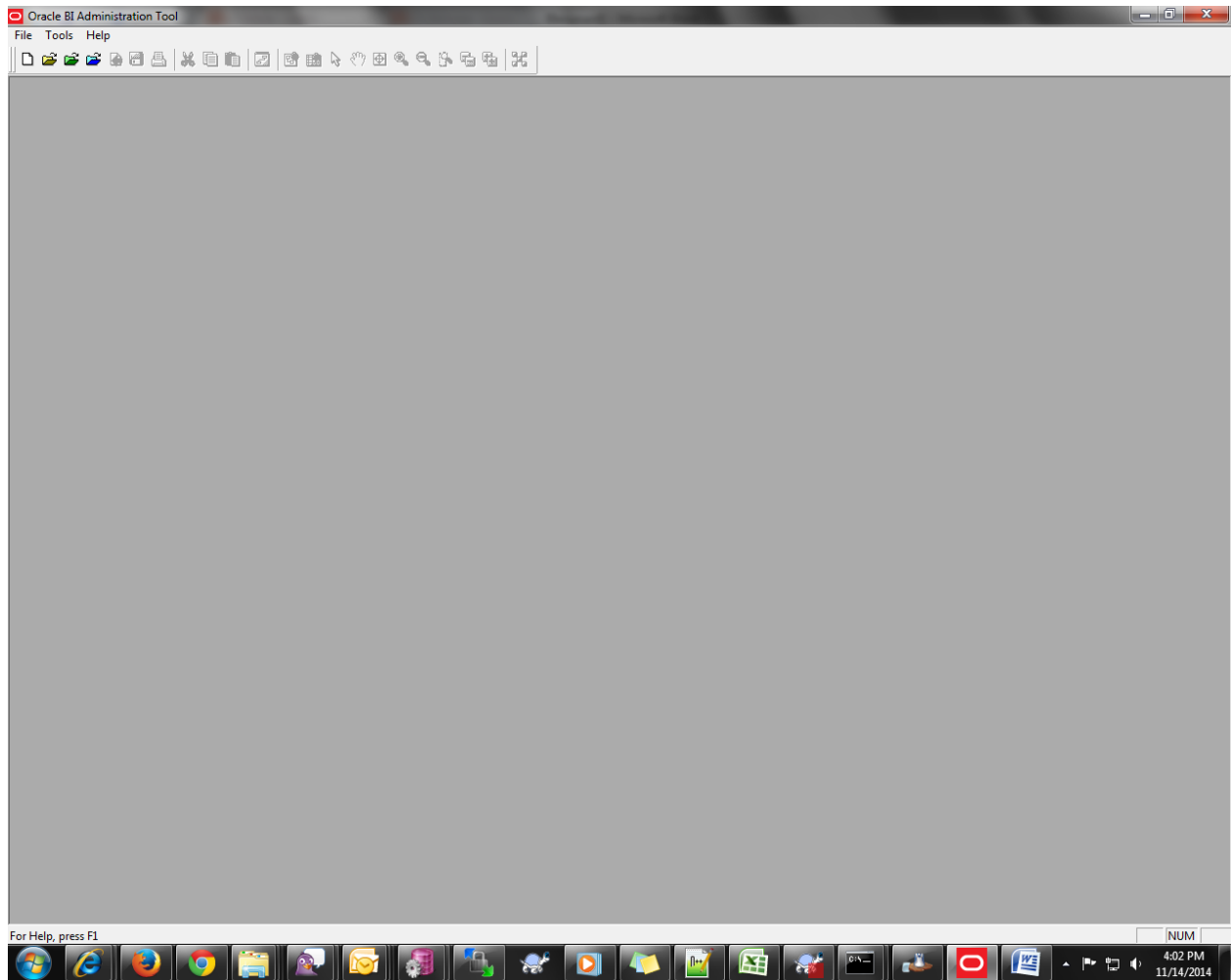
Table of Contents

Steps to be followed to merge two Repositories: 3

Steps to be followed to merge two Repositories:

Step 1 –

Install the Oracle BI Administration Tool. Post installation open the tool from start menu, this is how it will look.



Step 2 –

Drag the Rpd's to be merged from the svn paths to Oracle BI Administration Tool

- ELCM Standalone Release:

Take RPD from

<ELCM_RELEASE_VERSION_SVN>/Soft/FIS-REPORTING/OBIEE_11g/Rpd/EIS_MIS.rpd

and <ELCM_RELEASE_VERSION_SVN>/Soft/MAIN/EL/OBIEE_11g/Rpd/FLEXCUBE.rpd

- FCUBS Release:

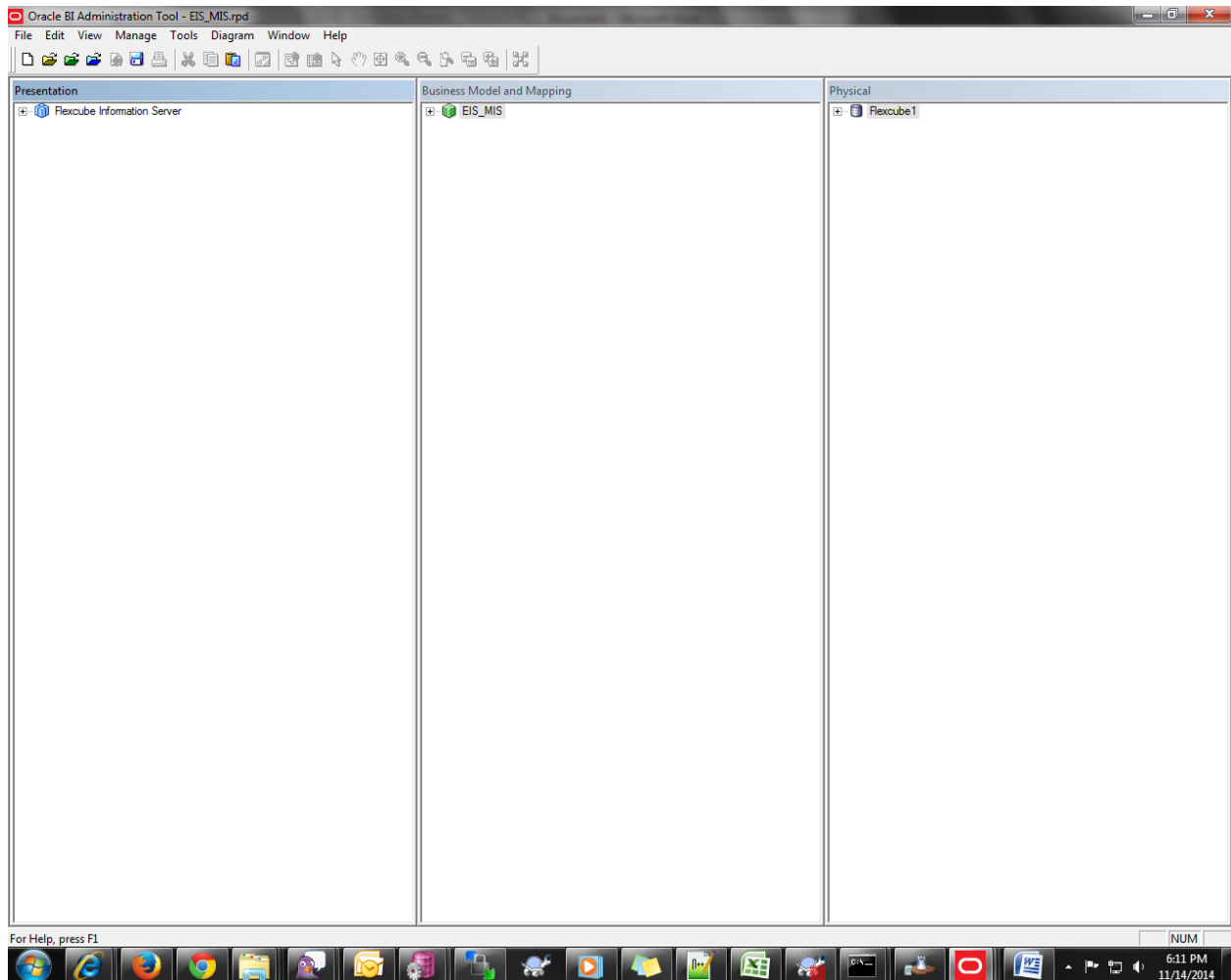
Take RPD from

<FCUBS_RELEASE_VERSION_SVN>/Soft/FIS-REPORTING/OBIEE_11g/Rpd/EIS_MIS.rpd

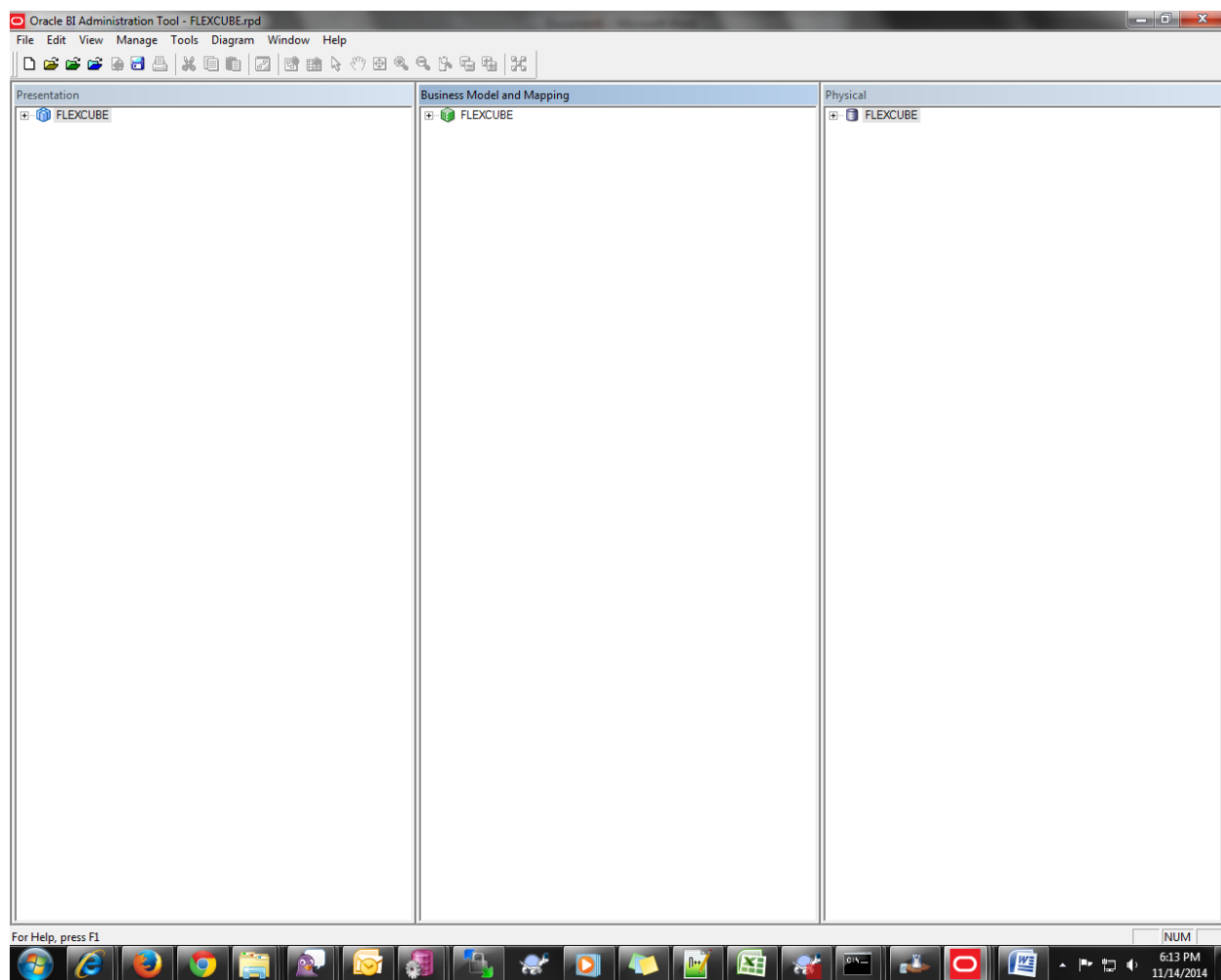
and <ELCM_RELEASE_VERSION_SVN>/Soft/MAIN/EL/OBIEE_11g/Rpd/FLEXCUBE.rpd

Step 3 –

After dragging Rpd will be loaded as shown



And

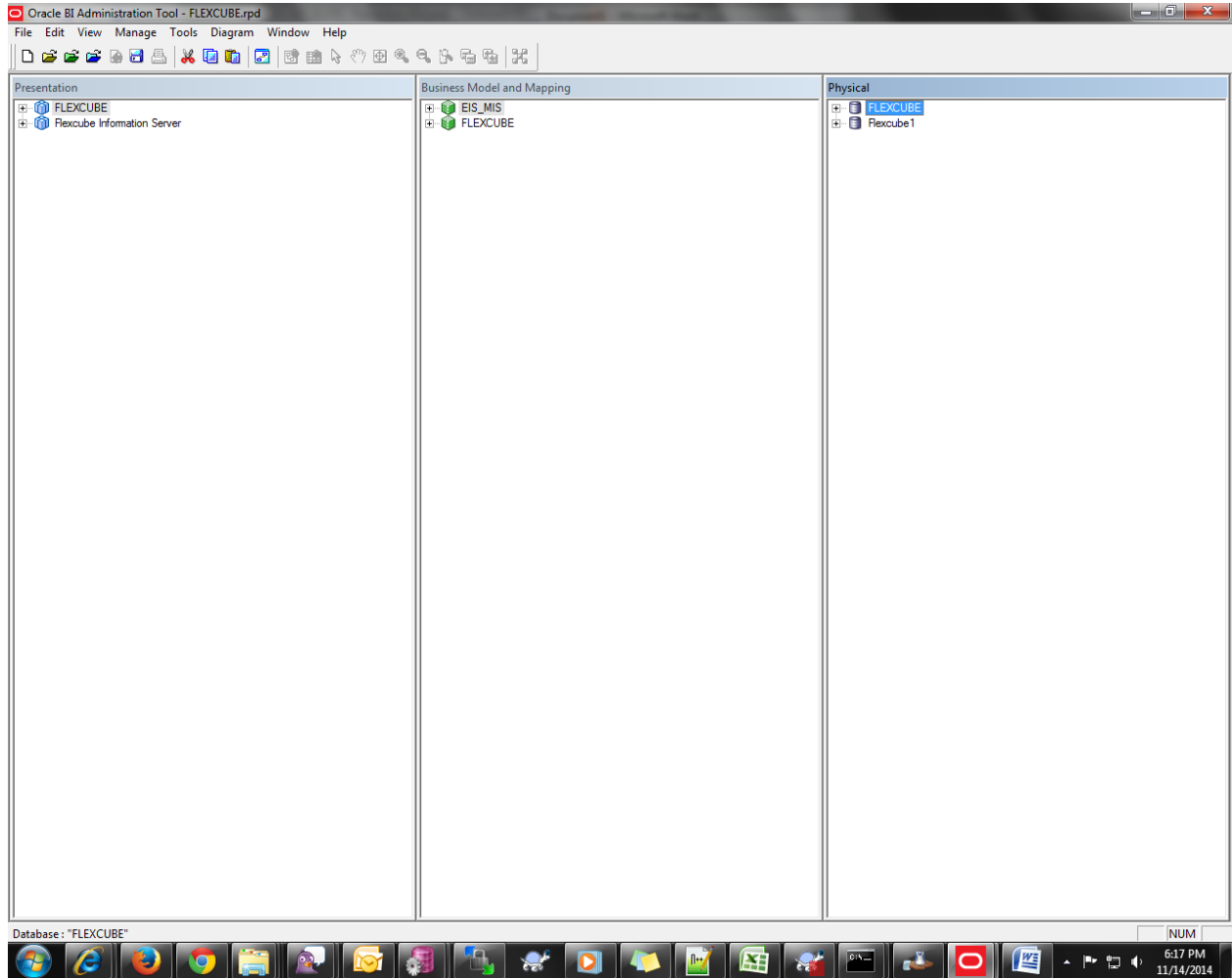


Step 4 –

Now copy all the instances from all the layers into the respective layers of the final Rpd. Use Drag and drop or Cntr+c and Cntr+v to copy from one RPD to another to its respective layer.

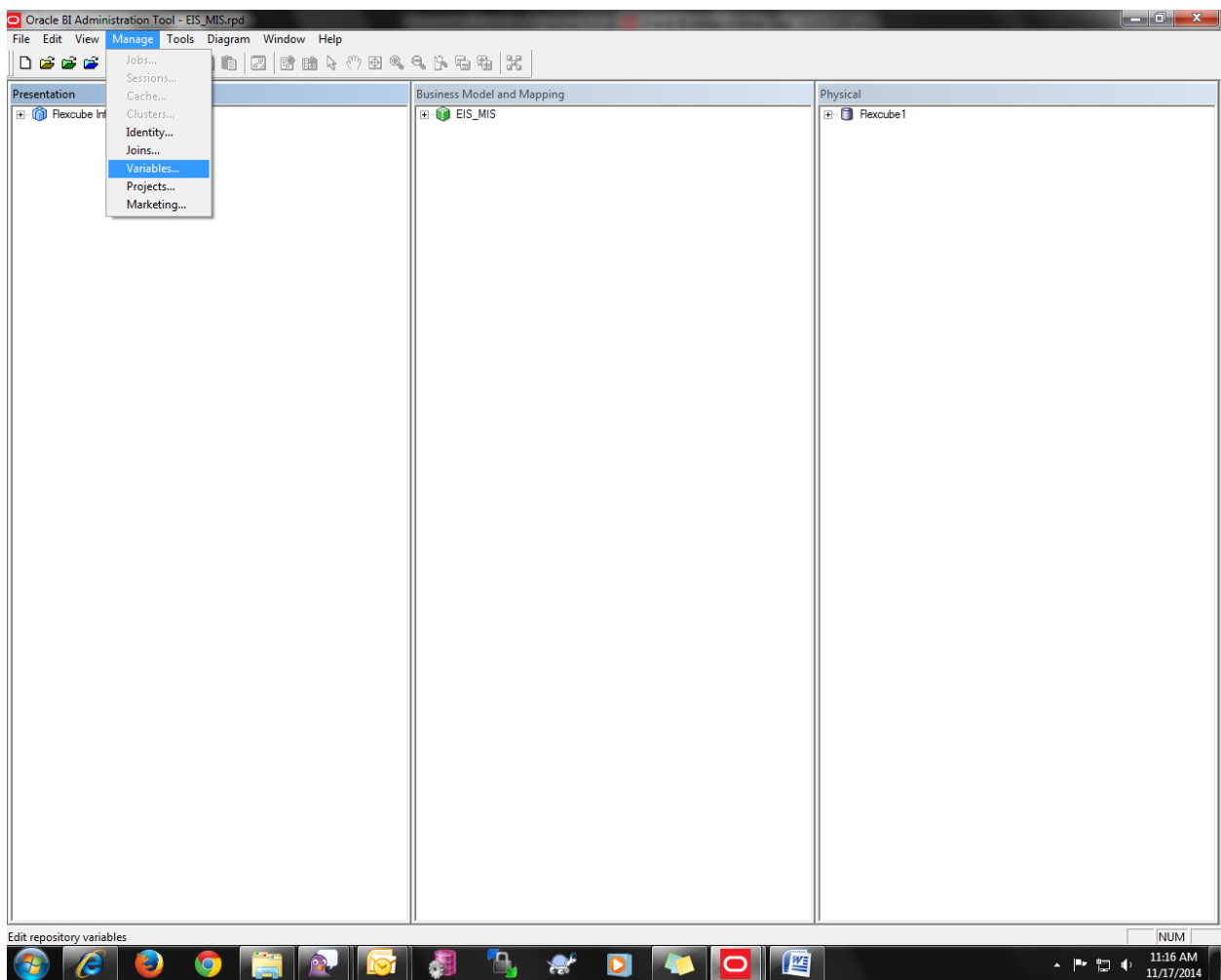
Copying should be done in the order starting from Physical layer then Business model layer and then Presentation layer. (i.e copy physical layer's subject area to other RPD then Business layer's subject area and then Presentation layer's subject area.)

Then the result Rpd will be as shown:



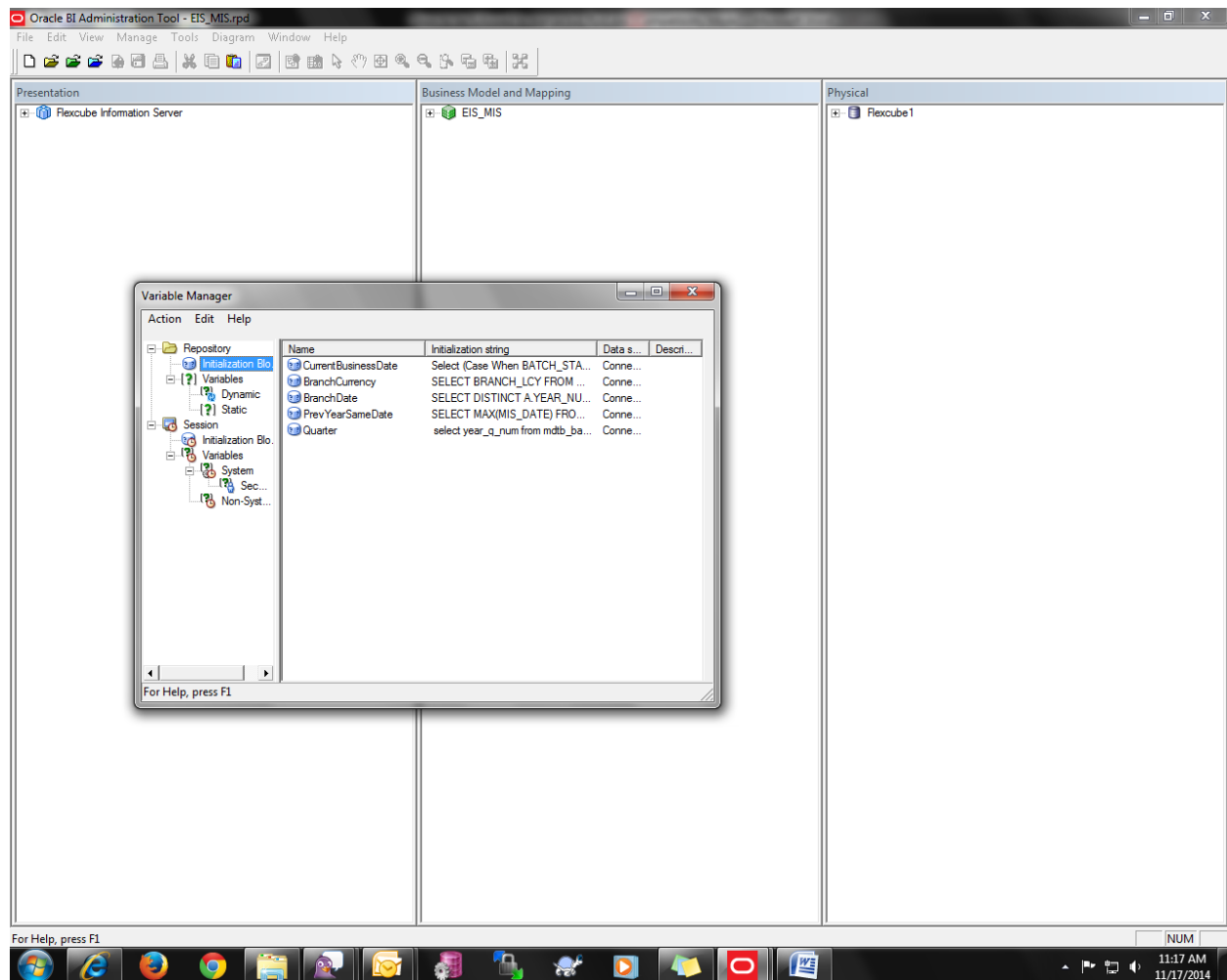
Step 5 –

Now check for the initialization blocks. It is present in top left as shown:



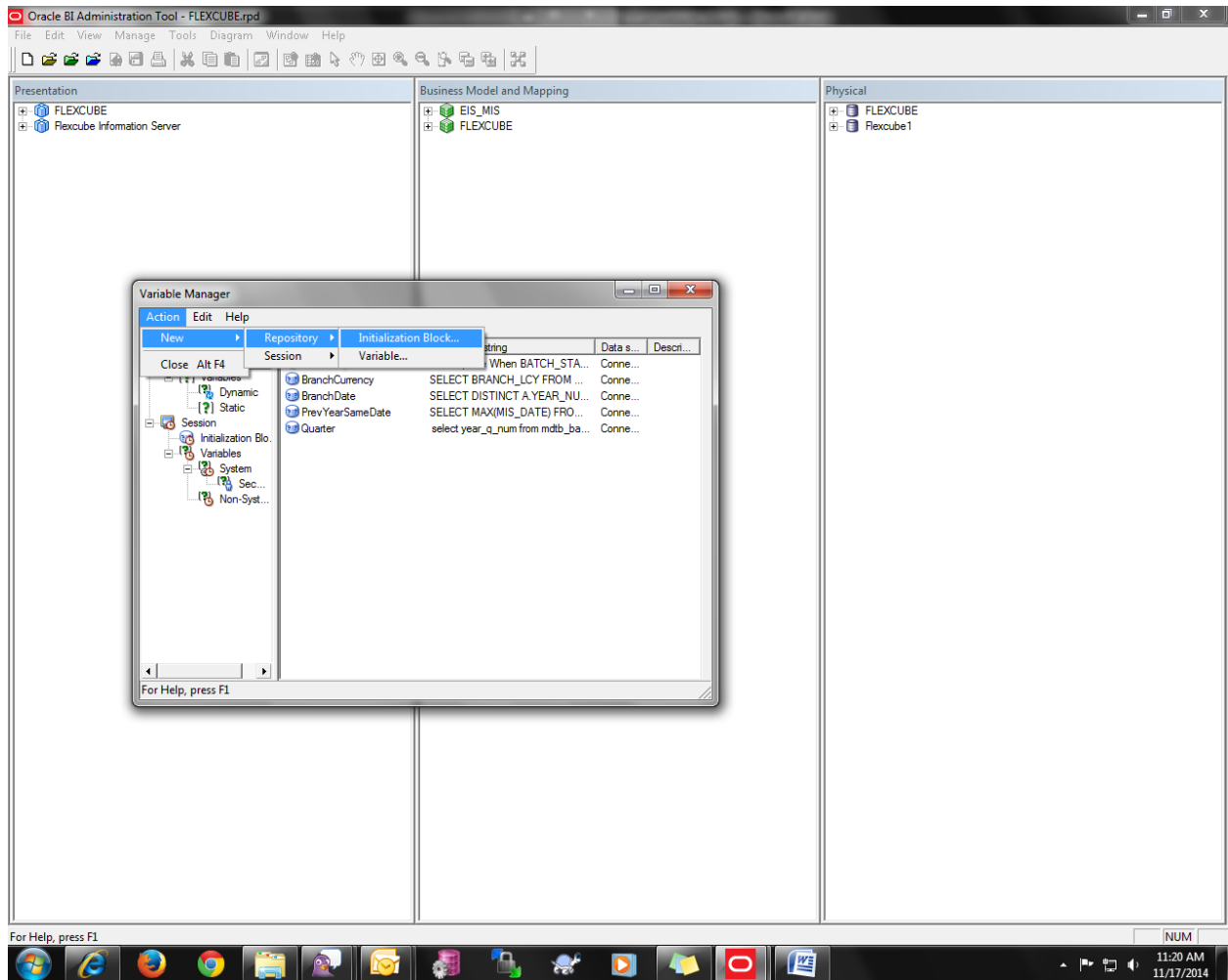
Step 6 –

After clicking on the variables, you can see the initialization blocks.



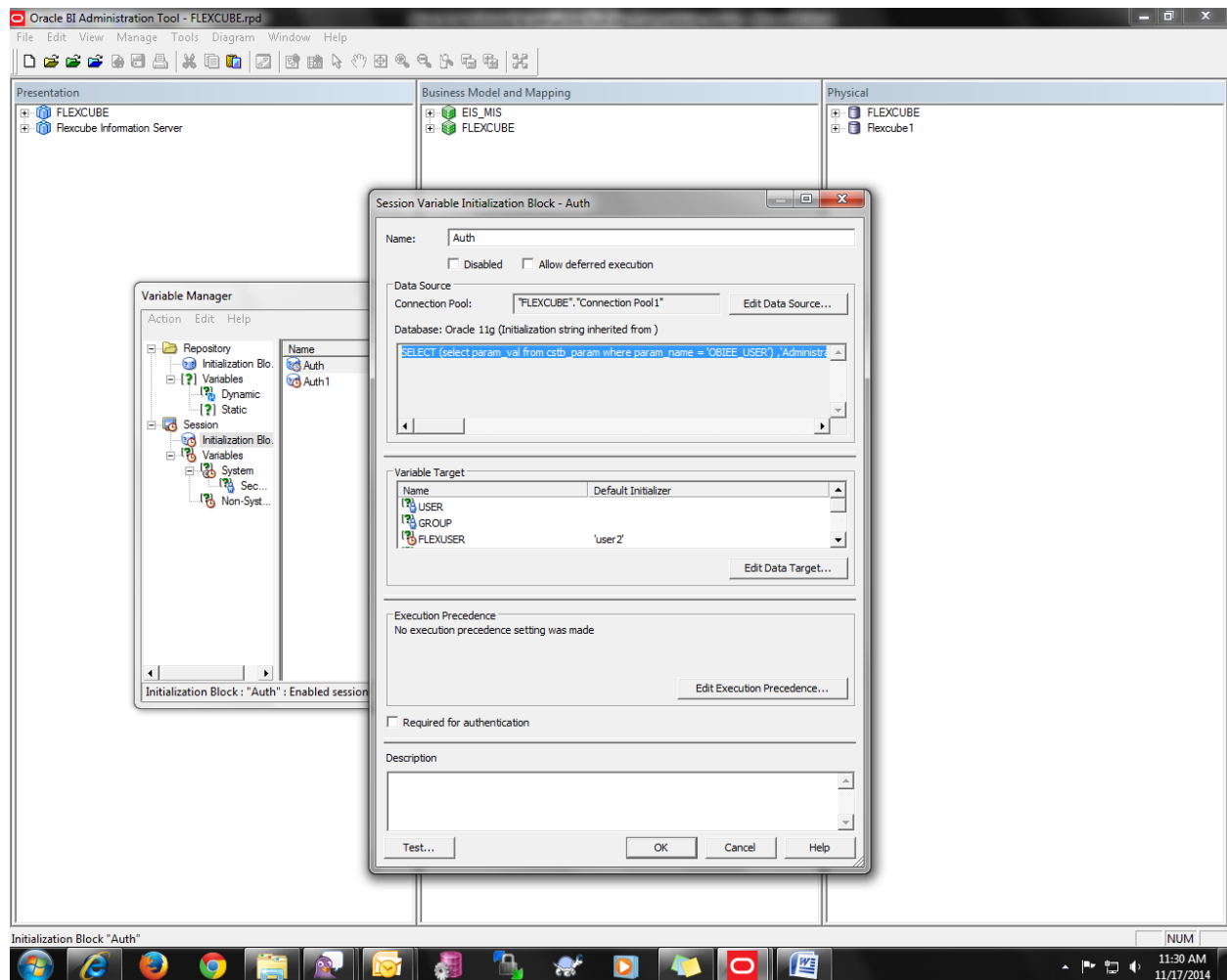
Step 7 –

Now check all the variables present in this initialization blocks are present in the final rpd also. If not we have to add them on our own. In order to add new initialization block click on 'Action' on the top left corner. The cursor should follow this path – Action → New → Repository → Initialization Block. After creating the initialization block for Repository then create another block for Session also using same path but select Session instead of Repository : Action → New → Session → Initialization Block.

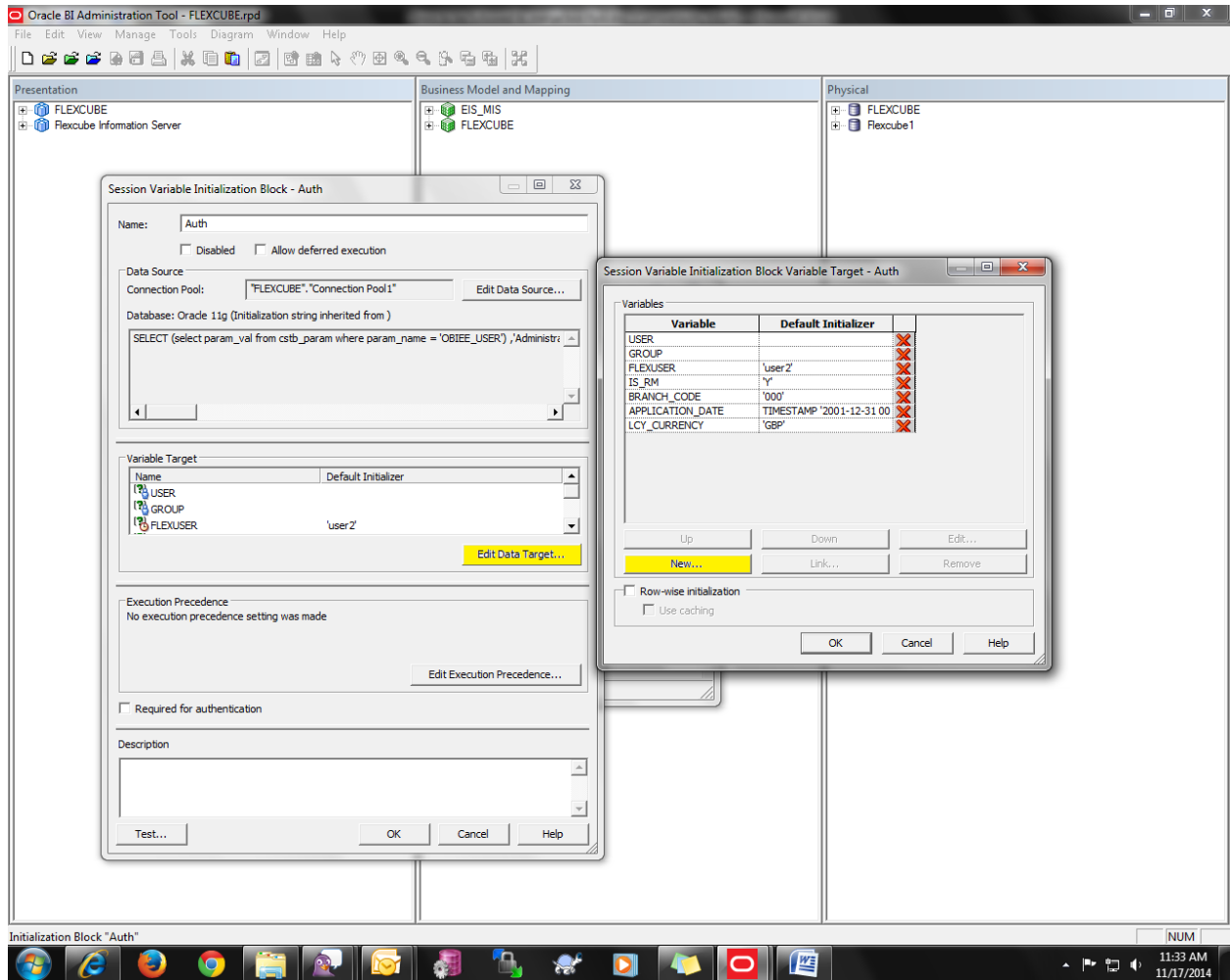


Step 8 –

Now after creating the blocks then copy the query present in the initialization blocks and then paste in the blocks which we created in the final rpd. We can view the query by double clicking on the block.

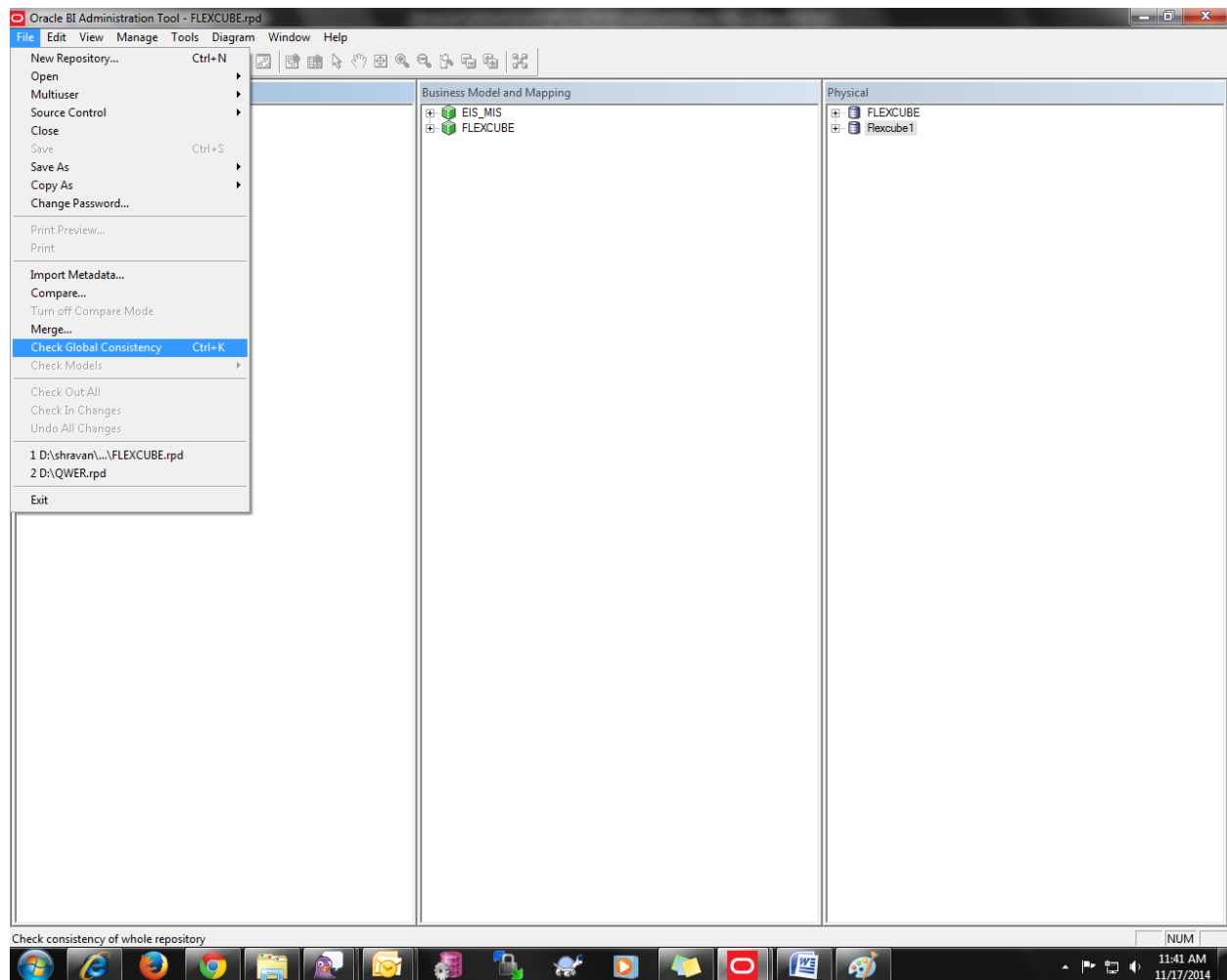


Now edit the data target by clicking on the 'Edit Data Target' button. Then by clicking on the new you can add the data targets. Add the data targets as present in the rpd to be merged. The data targets were nothing but the variables which we declare in the respective initialization block.

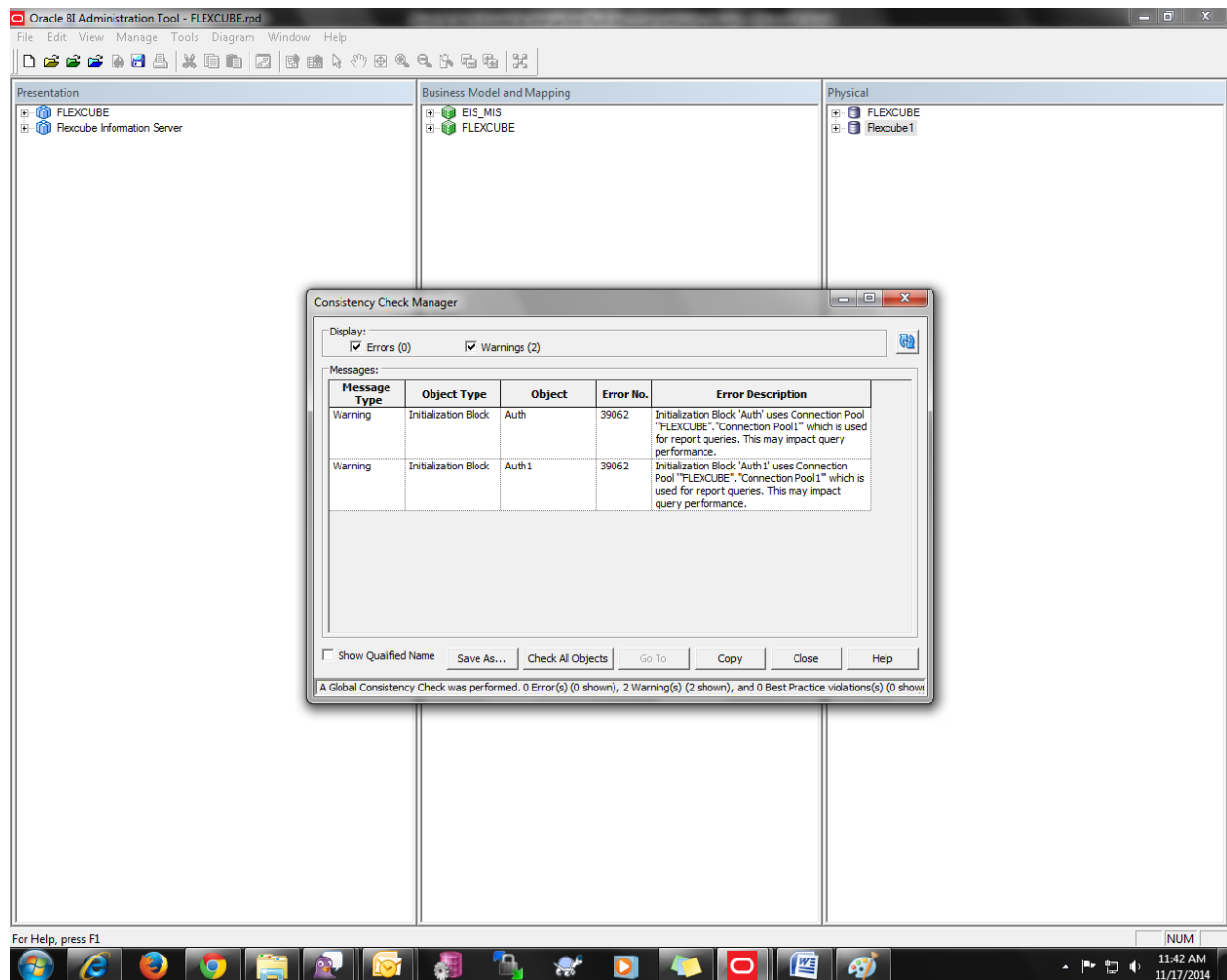


Step 9 –

After completion of all the variables and initialization blocks check the global consistency.



After checking it will shown as below if there are any errors or warnings.



Now the rpd has been merged successfully. Next we have to deploy the merged rpd into the server.

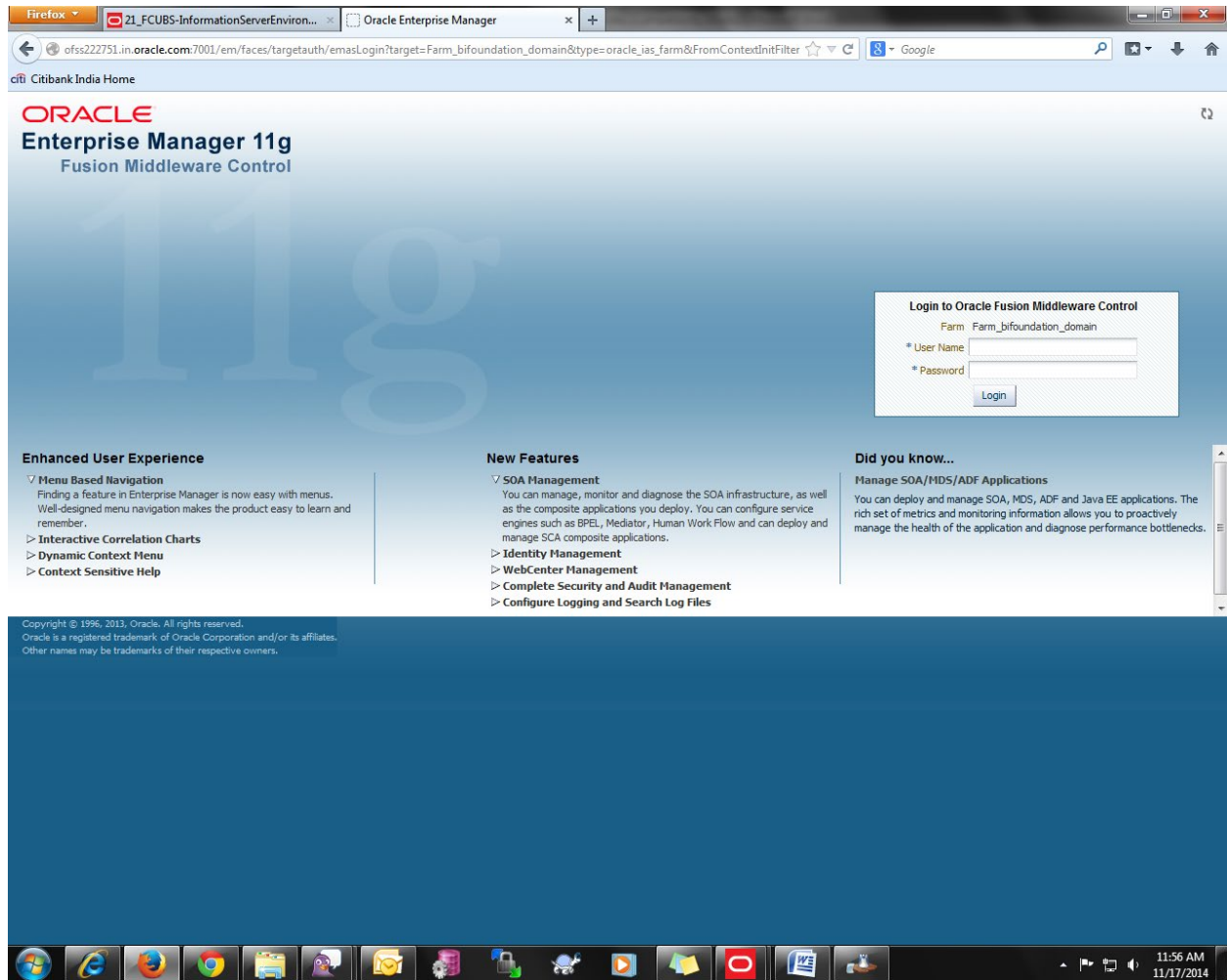
Step 10 –

1.

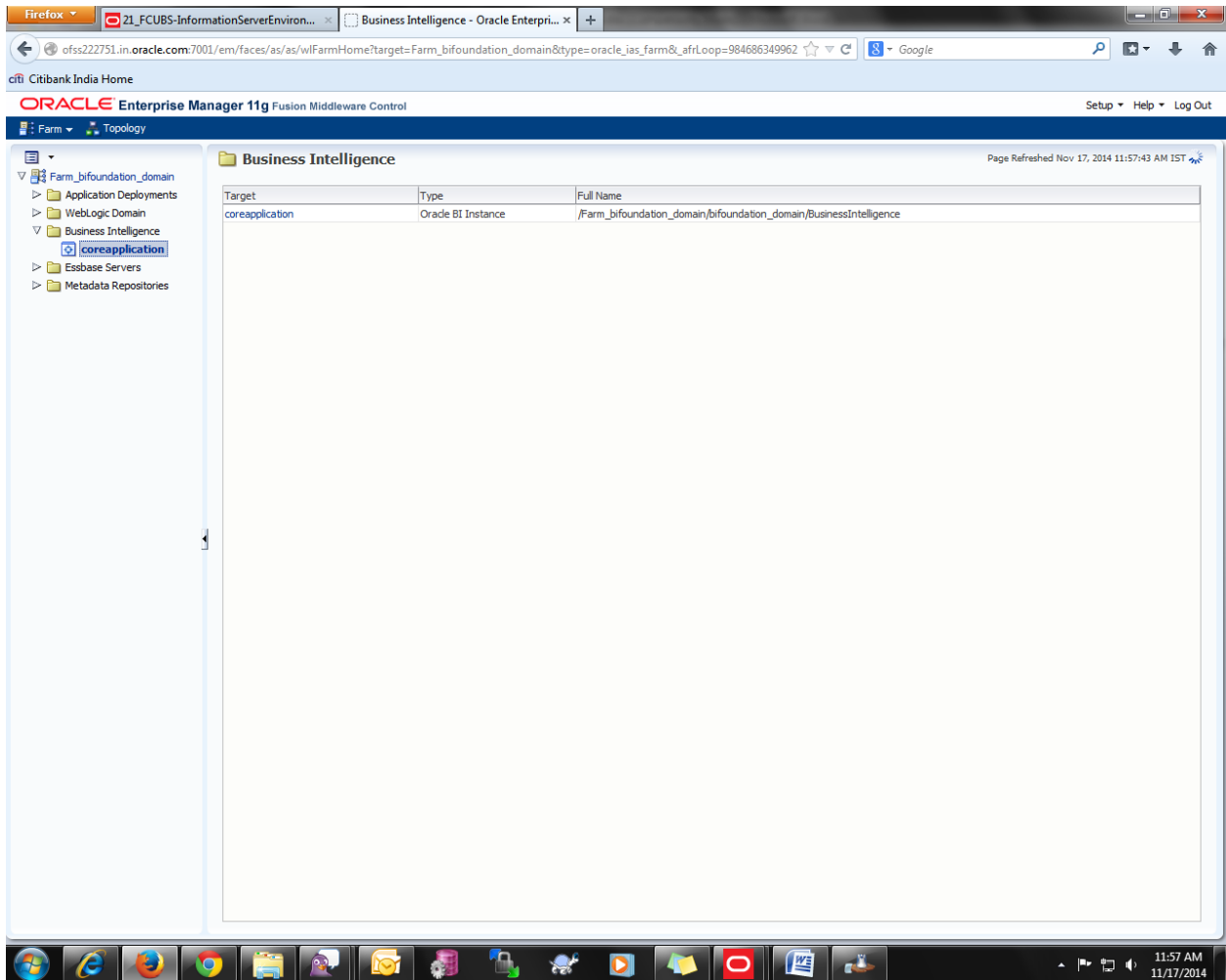
Login to OBIEE Enterprise Manager

Eg: http://<OBIEE_SERVER>:<PORT>/em/

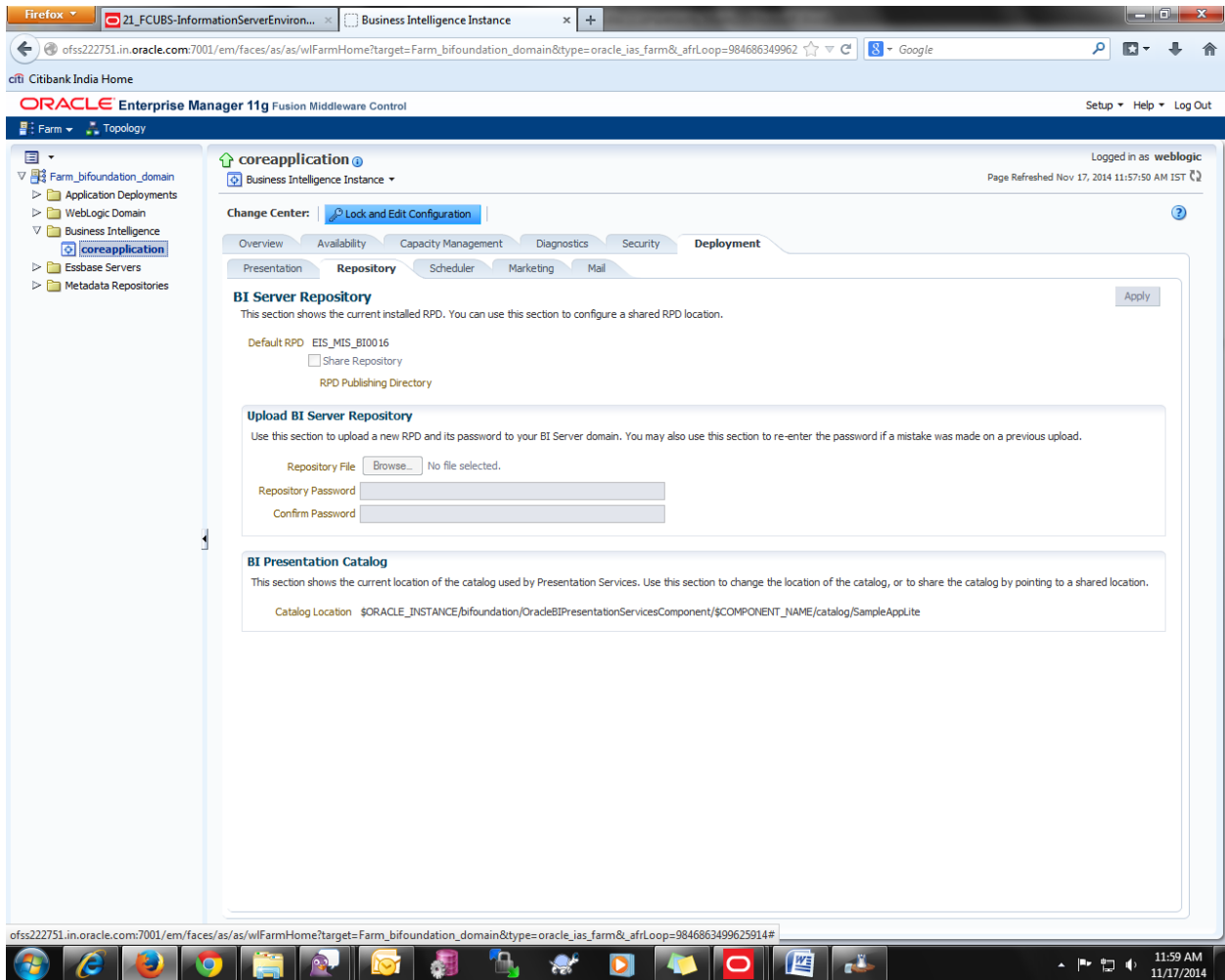
With credentials which has Admin role.



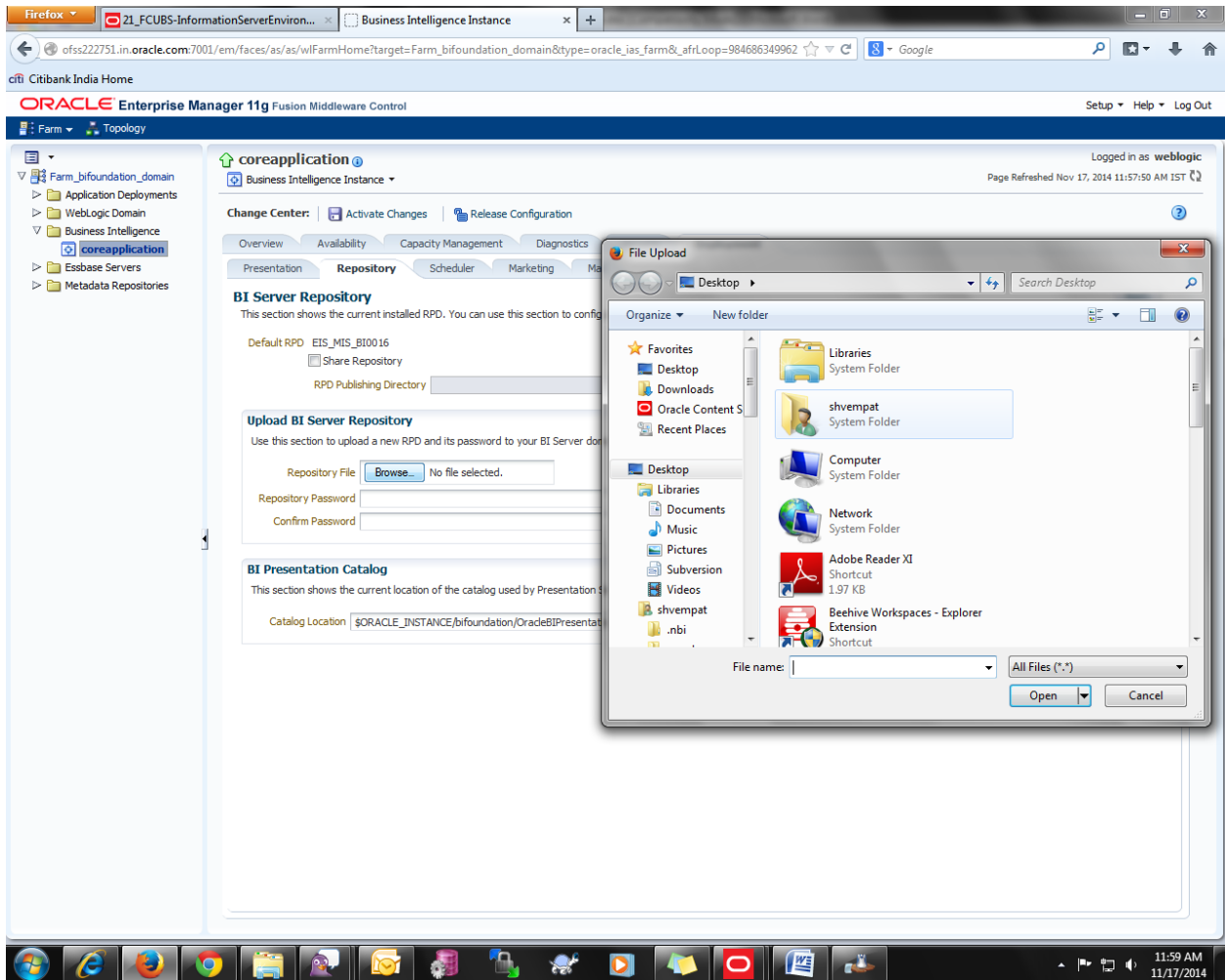
After logging in click on Business Intelligence → Core Applications:



Now after loading click on lock and edit configuration :



Then browse the merged rpd from your local machine and set the rpd password.



After setting the password click on 'Apply' and then after click on 'Activate Changes' button. Then your rpd is successfully deployed.

ORACLE
[May] [2021]
Version 12.87.7.0.0

Oracle Financial Services Software Limited
Oracle Park
Off Western Express Highway
Goregaon (East)
Mumbai, Maharashtra 400 063
India

Worldwide Inquiries:
Phone: +91 22 6718 3000
Fax: +91 22 6718 3001
www.oracle.com/financialservices/

Copyright © [2007], [2021], Oracle and/or its affiliates. All rights reserved.

Oracle and Java are registered trademarks of Oracle and/or its affiliates. Other names may be trademarks of their respective owners.

U.S. GOVERNMENT END USERS: Oracle programs, including any operating system, integrated software, any programs installed on the hardware, and/or documentation, delivered to U.S. Government end users are "commercial computer software" pursuant to the applicable Federal Acquisition Regulation and agency-specific supplemental regulations. As such, use, duplication, disclosure, modification, and adaptation of the programs, including any operating system, integrated software, any programs installed on the hardware, and/or documentation, shall be subject to license terms and license restrictions applicable to the programs. No other rights are granted to the U.S. Government.

This software or hardware is developed for general use in a variety of information management applications. It is not developed or intended for use in any inherently dangerous applications, including applications that may create a risk of personal injury. If you use this software or hardware in dangerous applications, then you shall be responsible to take all appropriate failsafe, backup, redundancy, and other measures to ensure its safe use. Oracle Corporation and its affiliates disclaim any liability for any damages caused by use of this software or hardware in dangerous applications.

This software and related documentation are provided under a license agreement containing restrictions on use and disclosure and are protected by intellectual property laws. Except as expressly permitted in your license agreement or allowed by law, you may not use, copy, reproduce, translate, broadcast, modify, license, transmit, distribute, exhibit, perform, publish or display any part, in any form, or by any means. Reverse engineering, disassembly, or decompilation of this software, unless required by law for interoperability, is prohibited.

The information contained herein is subject to change without notice and is not warranted to be error-free. If you find any errors, please report them to us in writing.

This software or hardware and documentation may provide access to or information on content, products and services from third parties. Oracle Corporation and its affiliates are not responsible for and expressly disclaim all warranties of any kind with respect to third-party content, products, and services. Oracle Corporation and its affiliates will not be responsible for any loss, costs, or damages incurred due to your access to or use of third-party content, products, or services.